



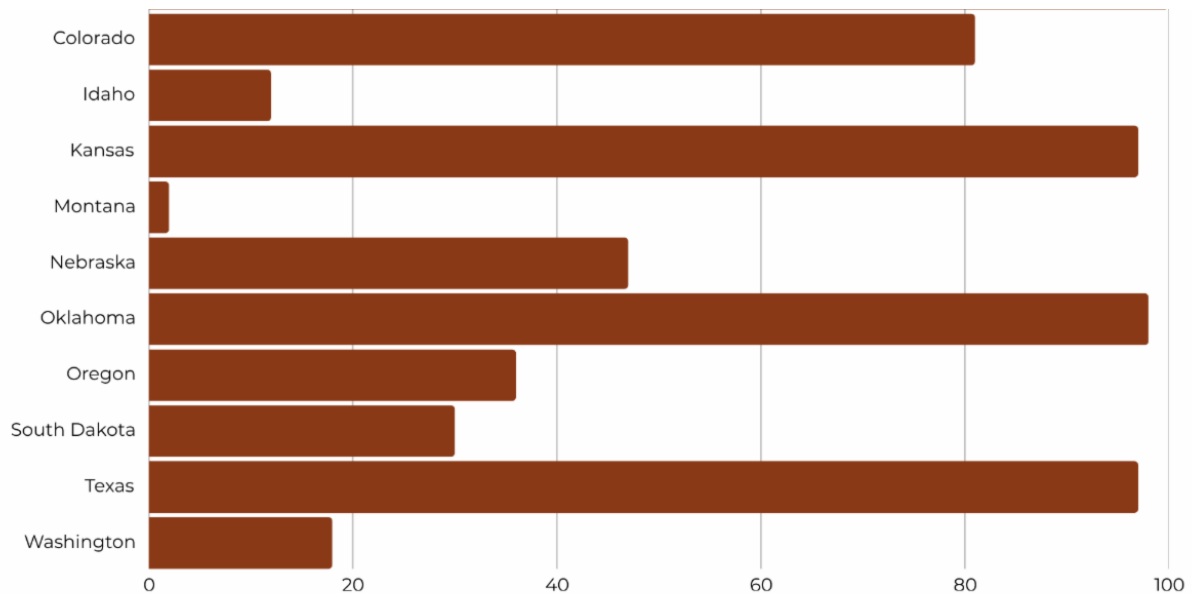
PLAINS GRAINS INC.



## HRW Crop Report

July 25, 2025

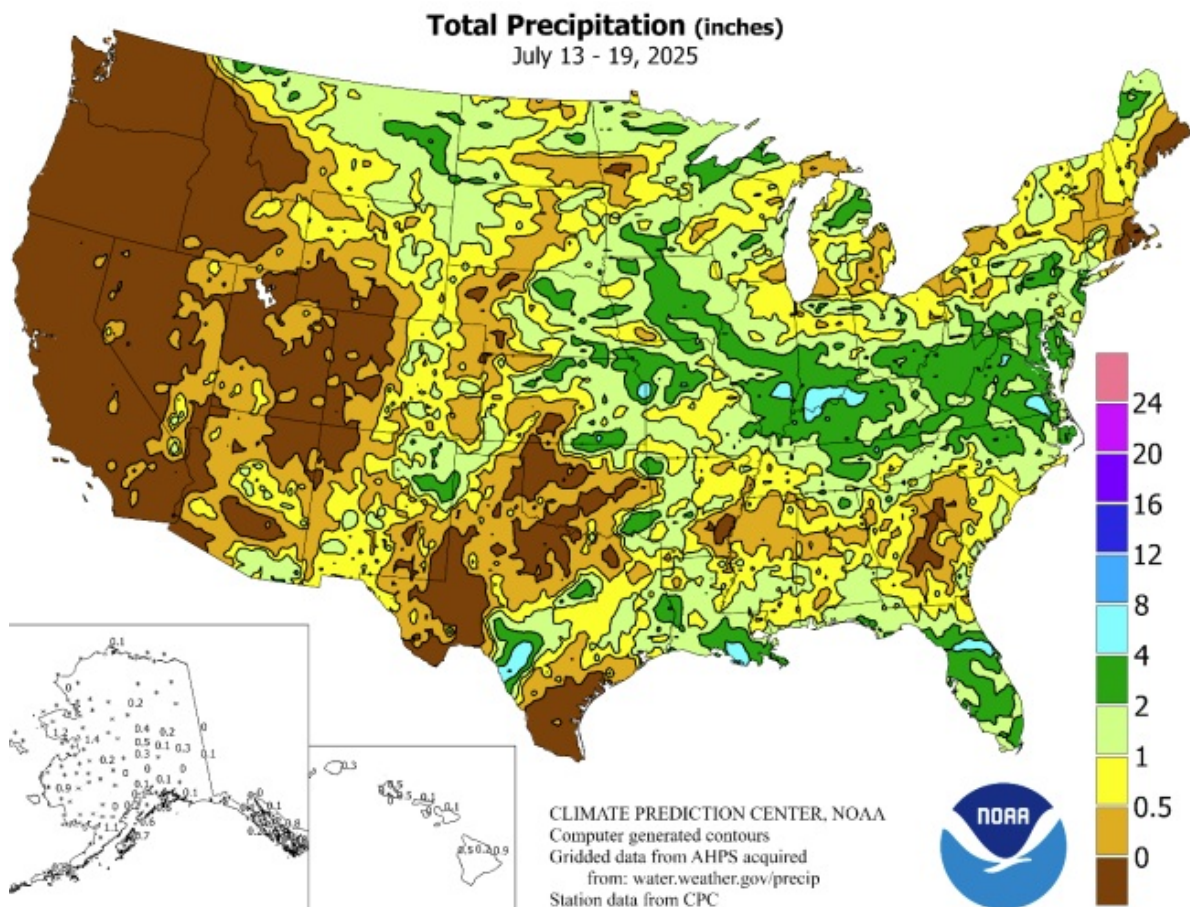
### Winter Wheat Harvested by State



### Wheat Data

Samples Tested	TW	TKW	Protein	FN	Grade
411	59.9	30.8	11.9	357.1	2

### Weather Outlook



## Nebraska Wheat Crop Report

### District 2 Report

Harvest across the state is approximately 47% complete.

In District 2, harvest is progressing steadily, with approximately 2/3 to 3/4 now complete.

Yields are averaging between 30 and 60 bushels per acre, which is better than early season expectations. Some fields with thinner stands are showing signs of sawfly lodging and wheat streak mosaic, though these issues remain limited and not widespread to the area. Protein levels range from 10% to 14%, and test weights are coming in between 60 and 63 pounds.

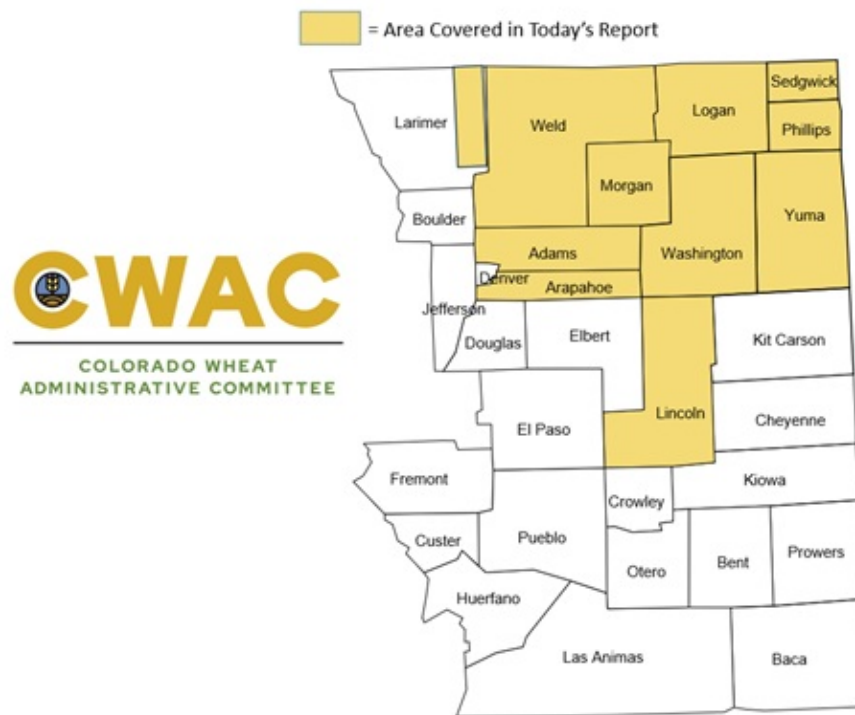


## Colorado Wheat Crop Report

Harvest is nearing completion across most of Eastern Colorado, making this our final harvest report. As of today, we estimate that Colorado's 2025 wheat harvest is 90%

complete, which is ahead of the 5-year average of 71%, according to USDA-NASS.

- **Lincoln County** – Harvest is expected to wrap up over the weekend. Yields range 20-55 bushels per acre, with an average test weight of 60 pounds per bushel and the average protein around 12%.
- **Adams and Arapahoe Counties** – This area is estimated to be about 90% complete. The average test weight is around 60 pounds per bushel, and the average protein is around 11.5%.
- **Washington, Morgan, and Logan Counties** – Harvest is estimated to be 90% complete. The average test weight is around 60 pounds per bushel, and the average protein is around 12%. Yields range 35-65 bushels per acre.
- **Yuma, Phillips, and Sedgwick Counties** – Harvest is estimated to be 85% complete. The average test weight is around 60 pounds per bushel, and the average protein is around 12%.
- **Western Weld and Eastern Larimer Counties** – Harvest in this area started about a week ago. Currently, the average test weight is 61.5 pounds per bushel, and the average protein is 12.5%.



July 24, 2025

[View Other Reports](#)

## Calendar of Events

### Wheat Field Days

June 18 - August 28: Montana State University

**FOR MORE INFORMATION**

July 14 - August 7: North Dakota State  
University

**FOR MORE INFORMATION**



**Plains Grain Inc.**  
P.O. Box 80085  
700 R St.  
Lincoln, NE 68501  
**765-688-0085**

**Contact Us**

Plains Grains Inc. | PO Box 80085 | Lincoln, NE 68501 US

[Unsubscribe](#) | [Update Profile](#) | [Constant Contact Data Notice](#)



Try email marketing for free today!