



PLAINS GRAINS INC.



## HRW Crop Report

July 18, 2025

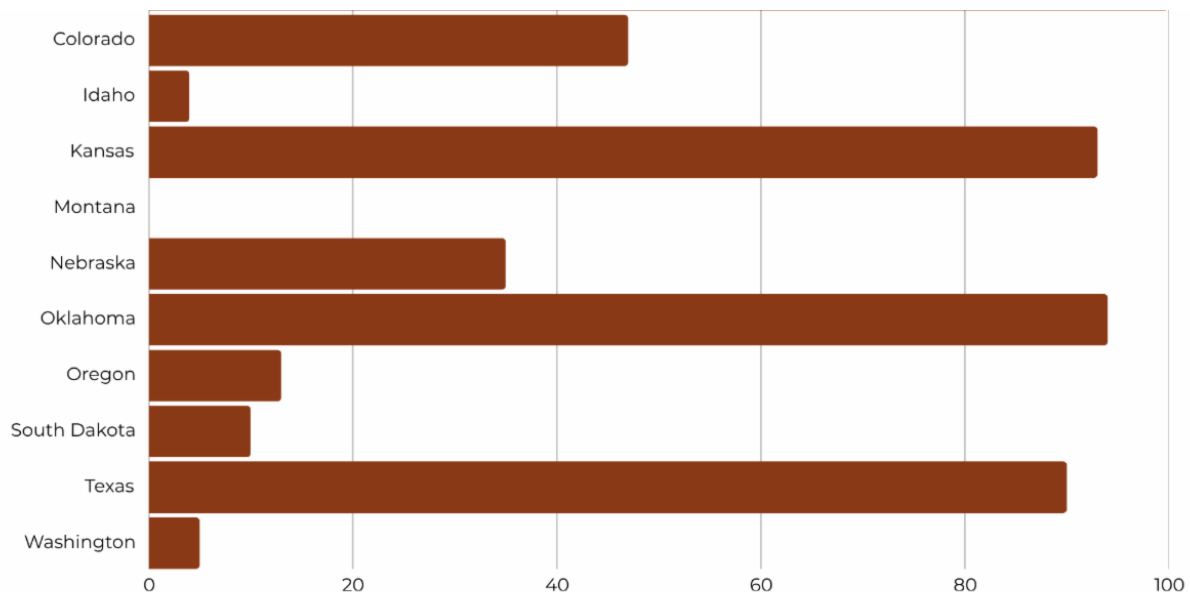
### State Updates

- TX- 95% done with harvest. Dry in fall with little rain in November. In April, lots of rain with drown out and disease leading to low yields. Soft wheat hit the worst. A few combines still running in the Panhandle and High Plains regions but wrapping up soon. Over the last 48 hours, scattered storms in the Western half of the Panhandle have accumulated anywhere from 0.1 - 1.5 inches, potentially stalling those still cutting in those areas. NASS lowered 2025 wheat production estimate to from 69 mil bu to 59.2 mil bu, the lowest production level since 2018. NASS also reduced the harvested acreage to 1.85 mil acres, but increased the average yield to 32 bu/a.
- OK- Dry in the fall, excellent moisture in the spring. Rain came at harvest and still have some to harvest
- KS- Western 1/3 of the state had good seeding and good moisture in November. Spring brought mosaic which effected quality very little with good tolerant varieties. Protein a little lower with a higher yield expected. Lots of variability throughout the state. Lower protein and lower test weight will be the biggest issues. Not seen any widespread FN issues.
- NE- Harvest only about 30% complete. Looking at an average crop of about 50 bu/ac. Two weeks behind normal harvest pace.
- WY – started in earnest this week; approx 15% harvested, with average yield in the low 30 bu/ac range, and protein 12%+. Weather has generally been favorable, and the same predicted through Friday; expecting widespread showers next week during Cheyenne Frontier Days.
- SD – winter wheat harvest is 10% complete. Est. yield is 30-75 bu/ac, variable depending on how dry it was in the fall. Overall NASS estimate of 48 bu/acre will be

close. Spring wheat is 64% g:e. Current yield estimate is 47 bu/ac, lower than last year. 7-10 days from harvest. A lot of sporadic isolated storms.

- MN- In the ground early and had pretty good rain. Harvest will start in about 2 weeks.
- ND- The western part of the state had an early start to spring. Dry conditions with no snowpack led to fast seeding. It came up nicely after some delayed rains, but has not had much since. No disease in the west with pretty good crop potential. Winter wheat looks good. The eastern part of the state was dry in the spring when seeding started,, then halted for a week cause of rain. The crop came up slowly and has been a little wet. Looking like better than average yields.
- ID- Fall wheat planted nicely and had an easy winter. The crop looked good in early spring, since then it has been really dry. Spring wheat crop is poor. Early samples of winter wheat are looking to be average.
- WA- Harvest has been going on for a week in central part of the state. The earlier part of the crop will be better. Spring crops are really struggling. Winter wheat coming through well and be average quality.
- OR- harvest is progressing on schedule, with warm dry weather supporting harvest operations. Good moisture in the winter, turned dry later on. Average crop overall. USDA figures have the state roughly on track to the five year average.
- KY- So much rain pushed corn planting into wheat harvest. By July 1, had received a total of 50 inches of rain. Good quality going to Siemer Milling, state average of around 75bu/ac.
- CA- Good growing season. Dessert durum had less acres this year, and there was a smaller winter wheat crop as well. Higher quality around the Stockton area, up to 115 bu/ac and high protein in 14-15 range. Issues with varieties marketed as high-quality but that performed more like feed wheat. Appreciated different partners helping with marketing about those varieties.

## Winter Wheat Harvested by State

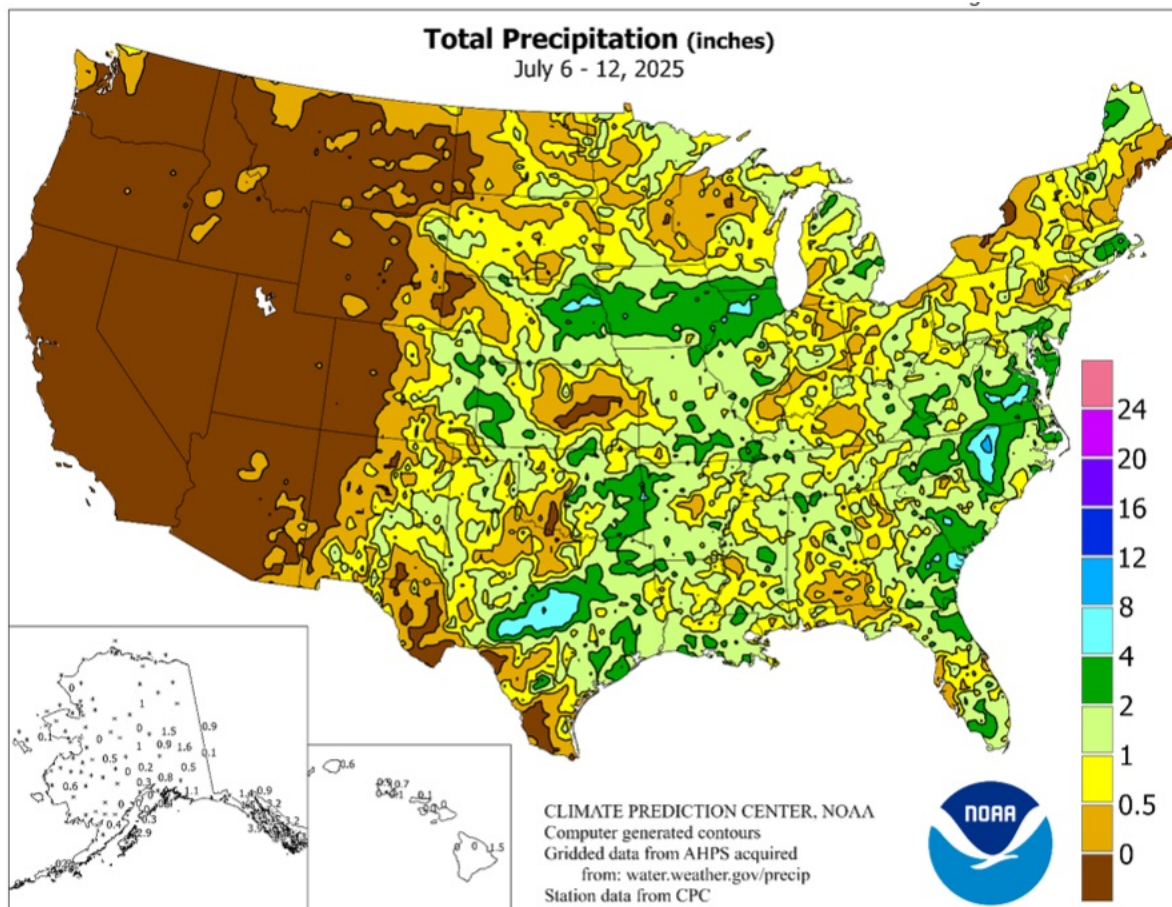


## Wheat Data

--	--	--	--	--

Samples Tested	TW	TKW	Protein	FN
362	59.9	31	11.9	357

## Weather Outlook



## Nebraska Wheat Crop Report

### District 3 Report

Harvest across the state is approximately 35% complete.

In District 3, harvest is well underway and estimated to be 75–80% complete.

A stretch of cool, overcast days with drizzle paused progress for about two days, but harvest has since resumed. June and July rains helped fill out sucker heads, contributing to better-than-expected yields compared to earlier projections. Yields in the area are ranging from 40-60 bushels per acre.

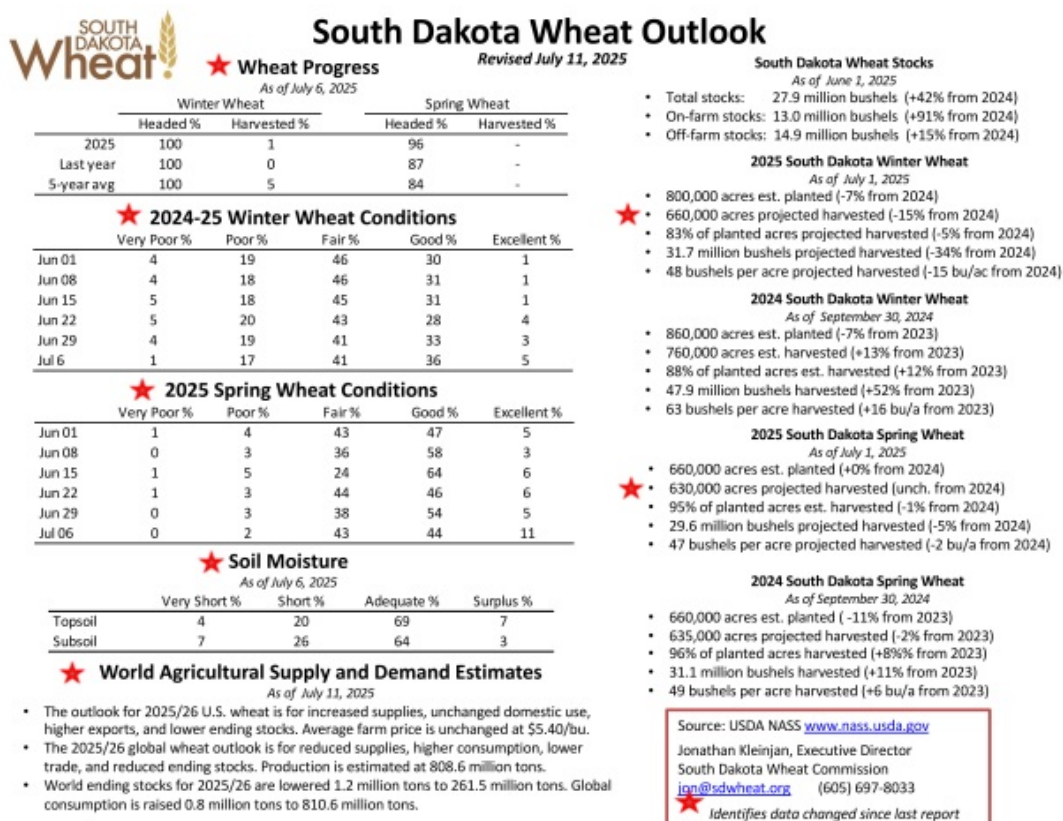
· Protein levels: 12–14%



- Test weights: 58–62 lbs
- Moisture content: 10–14%

There has been slight sawfly damage noted, and the increased moisture has led to noticeable grass and weed growth in certain fields. Weed pressure is expected to pick up post-harvest as more sunlight reaches the ground.

## South Dakota Wheat Crop Report



## Colorado Wheat Crop Report

According to today's (July 14) USDA-NASS Crop Progress Report, Colorado is 47% harvested. This is close to the 5-year average of 46%. Harvest in the southeastern corner of the state is nearing the end, despite some rain delays. Over the past week, this region received between 0.35 and 2.5 inches of rain.

- **Baca and Prowers Counties** – Harvest is estimated to be roughly 90% complete. The average test weight is around 61 pounds per bushel, and the average protein is 10%.
- **Kiowa County** – Harvest is also estimated to be roughly 90% complete. The average test weight is around 60 pounds per bushel, and the average protein is around 11.5%.
- **Cheyenne County** – Harvest is estimated to be about 85% complete. The average test weight is around 60 pounds per bushel, and average protein is 11%.

Overall, yields for Colorado's 2025 wheat harvest appear to be better than initially expected.



Rain and cooler-than-average temperatures in mid-May and early June gave the crop a much-needed boost. In its July 11 Crop Production Report, USDA-NASS estimated Colorado's 2025 winter wheat production at 74 million bushels (based on conditions as of July 1), up from 64.4 million bushels in 2024.

CSU Crops Testing is releasing variety trial results as they become available.

[View Other Reports](#)

## Calendar of Events

### Wheat Field Days

June 18 - August 28: Montana State University

**FOR MORE INFORMATION**

July 14 - August 7: North Dakota State University

**FOR MORE INFORMATION**



**Plains Grain Inc.**

P.O. Box 80085

700 R St.

Lincoln, NE 68501

**765-688-0085**

[Contact Us](#)

Plains Grains Inc. | PO Box 80085 | Lincoln, NE 68501 US

[Unsubscribe](#) | [Update Profile](#) | [Constant Contact Data Notice](#)



Try email marketing for free today!