



PLAINS GRAINS INC.



HRW Harvest Update

July 18, 2024

State Updates

CA - Most wheat has been harvested. Sample testing completed. 30% samples are feed wheat varieties that we will be testing. We are planning to test them all and to release a blending wheat report for our elevators so they know at what % they might be able to blend with high quality wheat varieties to maintain good quality of the flour.

CO – 85-90% harvested. Way ahead of average (39% avg.) so hot/dry so sped things up. Good quality, TW holding at 59/60 lbs, protein not too high – 11-12%. Avg. harvest for yield. Pleasantly surprised. Wrapping up quickly. Some rain past week. Slightly cooler temps forecast (mid-80s).

NE – 70-75% harvested. Rain in Southern Panhandle/SW regions. Good yields , Eastern NE 60-90, avg. 50-70. TW holding well (upper 50s/lower 60s). Increased moisture seeing some decrease protein. Lost acres in South Central – hail. Increased moisture some decline in TW, not significant.

WY – 21% harvested, dryland 90% harvested as of today. Most of irrigated 1-week to 10 days out. South of i-80 yields 35-some 50s, great TW, protein 13.5-15%. Moving North, yields have dropped, widespread hail/freeze. Good quality crop. No rain forecast.

SD – 20-25% winter wheat. Good yields 50-80, expect to see them getting better (later planted looking better than earlier). Protein all over, as low as 8.9 highs of 14.5%. TW good.

MN – Crop looks good, turning. Mostly headed by now, lots of moisture so some disease concerns. Still 3 weeks or so from harvest.

ND – USDA noting record spring and durum yield. Disease pressure, lots of spraying for fungicide. 3-weeks from harvest. Ideal temps, next week forecast 90s (hopefully doesn't add

stress). Durum vitreous concerns. Lots of crop potentials, but still time to have disease issues.

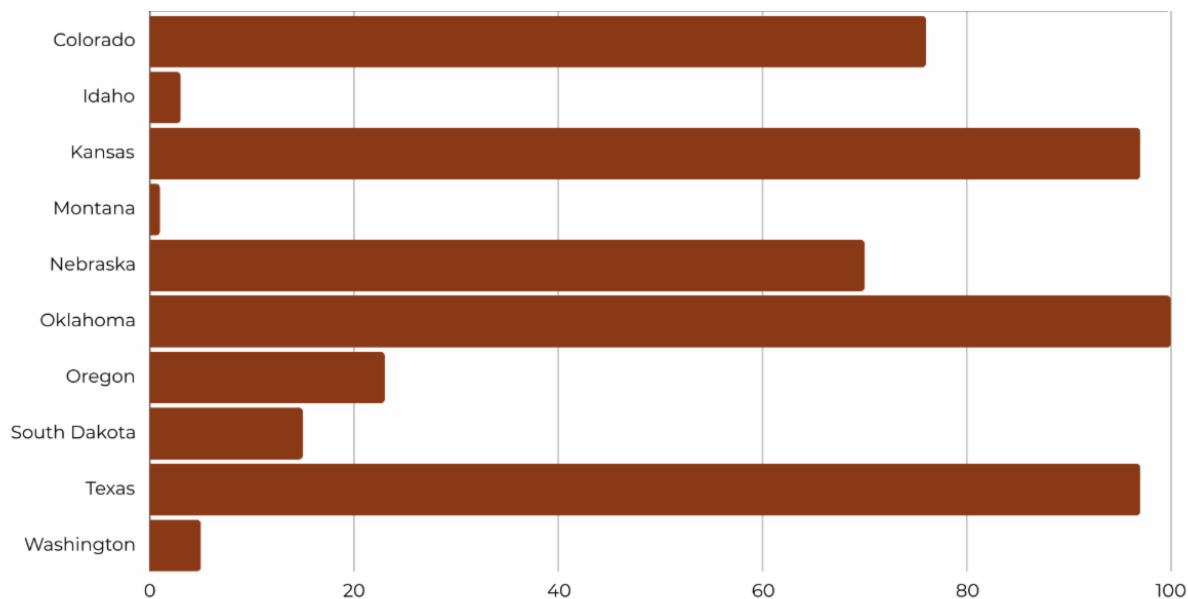
MT – Hot/dry past few weeks. 90s – 100. Spring ratings improved, winter declined. NASS dropped yields 51 to 48 (did not get June rainfall like 2023). Some isolated harvest in southern state. Swathing for sawfly in some areas. Est. 12% pro crop. Spring/durum/barley - going backward. Hot/dry/no rains. NASS 35 spring bushel, durum 34 bushel – est. avg – slightly below avg. spring. EST 20% harvested by end of next week.

ID - 4% harvested, heat past 2 weeks sped things up. Smoke cover from wildfires cooling down a bit (cool nights/hot afternoons). No disease, trace amounts of stripe rust. Expecting high yields, possible lower protein levels. 80s/90s forecast.

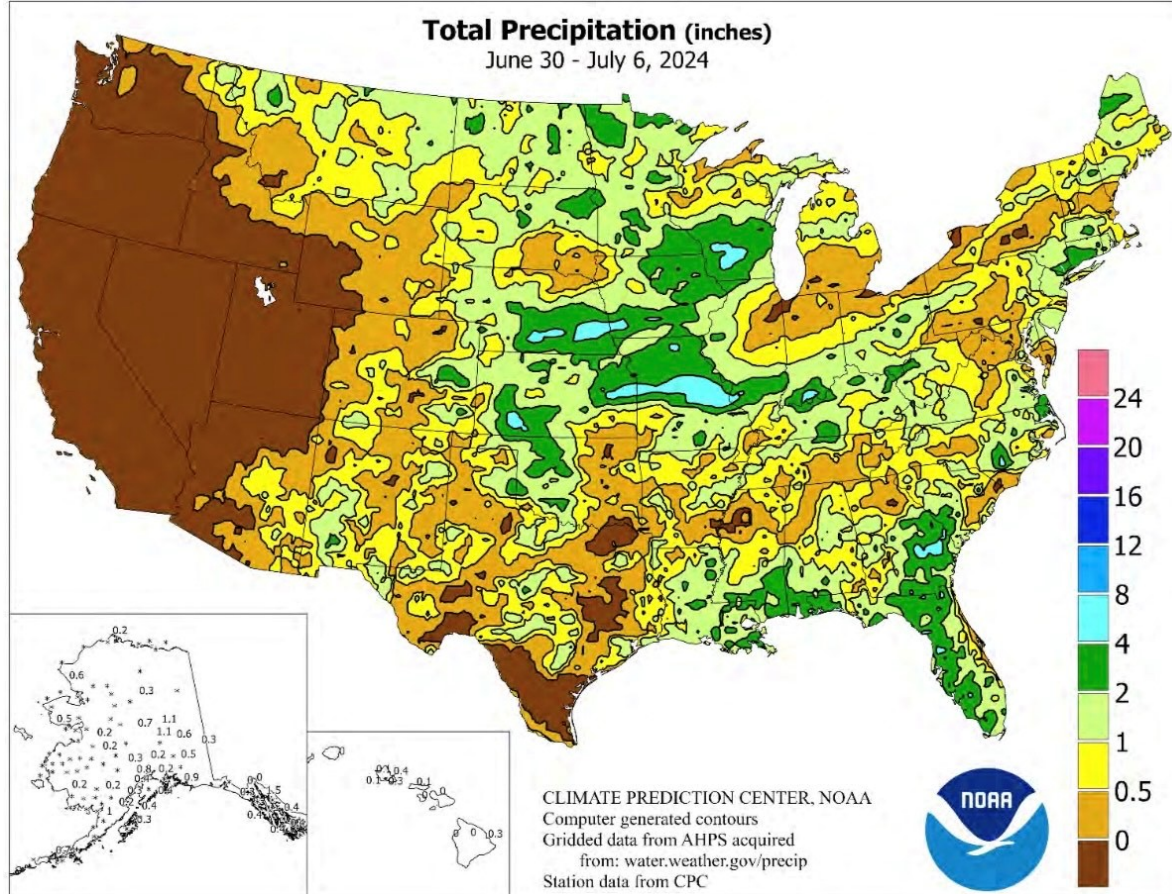
WA – Extremely warm temps mid 90s - mid 100s. Over 100 over the weekend, not cooling off at night like usual. Harvesting, est. 5-10% for winter wheat. Early reports S/Central WA – good yields, good protein for SW. HRW lower protein but no FN/TW issues, possible FN concerns further North. Some spring in flowering could be effected by heat.

OR – 23% harvested end of last week (vs. 10% average). Heat accelerated timeline. Increasing heat, triple digits over the weekend. No real damage to winter wheat, some shifts in spring/further behind (small portion of state). Pretty extensive early fire season (human/nature), limited loss in wheat acres but still concerning. Strong yields, good quality, strong TW, lower protein (SW).

Winter Wheat Harvested by State



Weather Outlook



Wheat Data and Grade Factors

# of Samples	Avg. Moisture %	Avg. Protein %	Avg. Dockage %	Avg. TKW(g)	Avg. Falling # (sec)
400	11.3%	12.1%	0.6%	29.5 g	356 sec

Grade	Avg. Test Weight (lb/bu)	Avg. Test Weight (kg/hl)	Avg. Foreign Material %	Avg. Damage %	Avg. Shrunken & Broken Kernels %	Avg. Defects %
1 HRW	60.8 bu/lb	80.1 kg/hl	0.1%	0.2%	0.7%	1.0%

These are straight averages of the data. Not all samples have been through all the tests at this time. This is preliminary data from the samples that have completed these tests at the time of publication and the data will continually change until all samples have been collected and analyzed.



Nebraska Wheat Crop Report

July 18, 2024



USDA Crop Progress Report for the week ending July 17th, 2024

Winter wheat harvest is reported 70% completed for the state, compared to the 5-year average of 36%. Topsoil moisture is reported to be 4% very short, 21% short, 62% adequate and 13% surplus. Subsoil moisture is reported to be 4% very short, 23% short, 61% adequate, and 12% surplus.

Northern Panhandle

Harvest is in full swing in the northern panhandle region. Test weights and protein numbers are looking good across the area. Besides the freeze damage that was reported last week, no other damage reports have been made. Producers are still expecting a quality crop this harvest season. A local producer reported that yields are averaging between 30-40 bu/ac.

Weather Temperatures - Alliance, NE

July	19th	20th	21st	22nd	23rd	24th	25th
High	89	85	81	82	86	89	94
Low	58	56	53	55	57	58	60

Southern Panhandle

Farmers were able to get back into the field after several days of being on hold due to moisture across the region. Protein dipped below average due to the increased moisture, but producers still expect to harvest a quality wheat crop. The yields here are looking great and are bringing in an average of 50-70 bu/ac and test weights were reported as above average.

Weather Temperatures - Sidney, NE

July	19th	20th	21st	22nd	23rd	24th	25th
High	90	86	81	82	86	90	94
Low	59	57	54	54	57	58	61

Southwest

Farmers were able to get back into the field to finish up harvest after recent moisture caused a few days of delay. Test weights and protein were slightly affected but seem to be improving after the dryer conditions this past week. Overall, farmers have had a good harvest this season.

Weather Temperatures - McCook, NE

July	19th	20th	21st	22nd	23rd	24th	25th
High	91	86	80	80	85	89	93
Low	63	60	59	58	60	63	64

Southcentral

The south central region is reporting approximately over 80% complete with harvest. A local producer states that test weights are currently averaging around 56-59 lbs. Past hail damage has caused a loss in acres, but intact field yields are looking good.

Weather Temperatures - Kearney, NE

July	19th	20th	21st	22nd	23rd	24th	25th
High	85	80	75	78	82	85	89
Low	62	61	59	58	60	62	65

Southeast

Harvest in the southeast region is beginning to wrap up across the area. Test weights have increased to average in the low 60s after moisture caused a slight decrease last week. Farmers have reported that this harvest season has been exceptional with average yields ranging between 60-100 bu/ac.

Weather Temperatures - Lincoln, NE

July	19th	20th	21st	22nd	23rd	24th	25th
High	84	80	77	81	84	86	89
Low	65	63	61	61	62	65	67



District 2 board member, Tyson Narjes harvests in the western Nebraska sunset.

Harvest Report Colorado Wheat

Wednesday, July 17, 2024

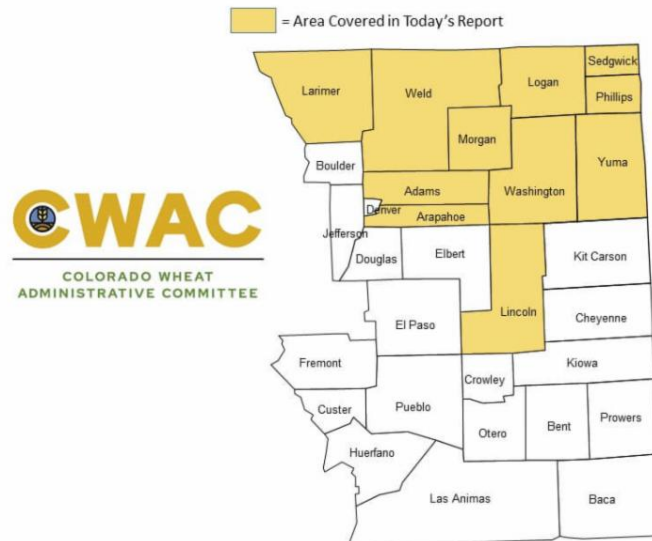
By: Colorado Wheat

Harvest is nearing completion across most of Eastern Colorado, making this our final harvest report. As of today, we estimate that Colorado's 2024 wheat harvest is 90% complete, significantly ahead of the 5-year average of 39%, according to USDA-NASS.

- Lincoln County – Harvest is expected to be wrapped up by the end of the week. Yields range 20-55 bushels per acre, with an average test weight of 60 pounds per bushel and an average protein of 11%.
- Adams and Arapahoe Counties – This area is estimated to be about 85%

complete. Yields are variable, ranging 30 to 65 bushels per acre. The average test weight is around 60 pounds per bushel and average protein is 12 percent.

- Washington, Morgan, and Logan Counties – Harvest is estimated to be 90% complete. The average test weight is 59 pounds per bushel and the average protein is around 11%.
- Yuma, Phillips, and Sedgwick Counties – Harvest is estimated to be 90% complete. Yields range 40-60 bushels per acre, with an average test weight of 60 pounds per bushel and an average protein of 12%.
- Western Weld and Eastern Larimer Counties – Harvest in this area started about 9 days ago, and is expected to last at least another week. Currently, the average test weight is 60 pounds per bushel and average protein is 12%.



July 17, 2024

Things to Know

2024 HRW State Variety Surveys

Check out the variety surveys from the HRW states for 2024!

[Kansas Variety Survey](#)

[Colorado Variety Survey](#)

[Texas Variety Survey](#)

[Nebraska Variety Survey](#)

[Montana Variety Survey](#)



Plains Grain Inc.
P.O. Box 80085
700 R St.
Lincoln, NE 68501
[765-688-0085](tel:765-688-0085)

Contact Us

Plains Grains Inc. | PO Box 80085 | Lincoln, NE 68501 US

[Unsubscribe](#) | [Update Profile](#) | [Constant Contact Data Notice](#)



Try email marketing for free today!