

# Harvest Summary of HRW September 2, 2022

By Mark Hodges, Executive Director, Plains Grains, Inc.

<u>State</u>	<u>Percent Complete:</u>
○ Texas	100%
○ Oklahoma	100%
○ Kansas	100%
○ Colorado	100%
○ Nebraska	100%
○ South Dakota	100%
○ Montana	99%
○ Washington	91%
○ Oregon	99%
○ Idaho	78%
○ Wyoming	100%

The 2022 HRW wheat harvest is rapidly winding down.. Idaho is now 78% complete with all other states now over 90% complete with harvest. There are now 460 samples in lab in multiple stages of testing. Dockage 0.5, TW, 60.6 (slightly above 60.3 2021). Damaged kernel totals are a contrast to last year. 2.2 vs. 1.7% in 2021, but are associated with sprout damage resulting from 8” to 11” of rainfall in isolated areas during early stages of harvest. Overall protein content avg. 12.9 vs. 12.0 in 2021, and 11.9 in 2020. Thousand Kernel Weights are averaging 30.4 g, kernel diameter 2.57 mm vs. 2.58 2021. Hardness 65 vs. 61.1 2021. FN 341.6 vs 368 in 2021.

Composites: There are now 70 composited samples in the lab representing (OK, TX, KS, NE, SD, WY, CO & MT) all remaining samples are from grainsheds out of MT and the PNW. Avg. flour yield 78, ash 0.53, weakness in wet gluten numbers as overall average in now 29.4, like to see above 30. Min/max variability, as low as 20.5 as high as 41.2.

There are now 460 individual samples used to form 70 composites in the lab. There have been 47 of those 70 milled and are in the process of evaluation. Bake water absorptions are averaging 64% (2% higher than last year) and loaf volumes averaging 922 cc (31 cc higher than last year).

Below the data are the number of samples now tested/total projected for each testing parameter.

## August 25, 2022

Tst	Exp	MST	Pro %	DKG	TKW	FN	Grade	Test Weight	FM	DMG	S&B	DEF
458**	520	10.7	12.9	0.5	30.4	341	HRW 1	60.6 79.6	0.2	0.6	1.0	1.8
N=		458/520	458/520	458/520	458/520	458/520		458/520 458/520	458/520	458/520	458/520	458/520

\*All 458 samples are in various stages of testing.

## September 2, 2022

Tst	Exp	MST	Pro %	DKG	TKW	FN	Grade	Test Weight	FM	DMG	S&B	DEF
460**	520	10.7	12.9	0.5	30.3	339	HRW 1	60.6 79.6	0.2	0.6	1.0	1.8
N=		460/520	460/520	460/520	460/520	460/520		460/520 460/520	460/520	460/520	460/520	460/520

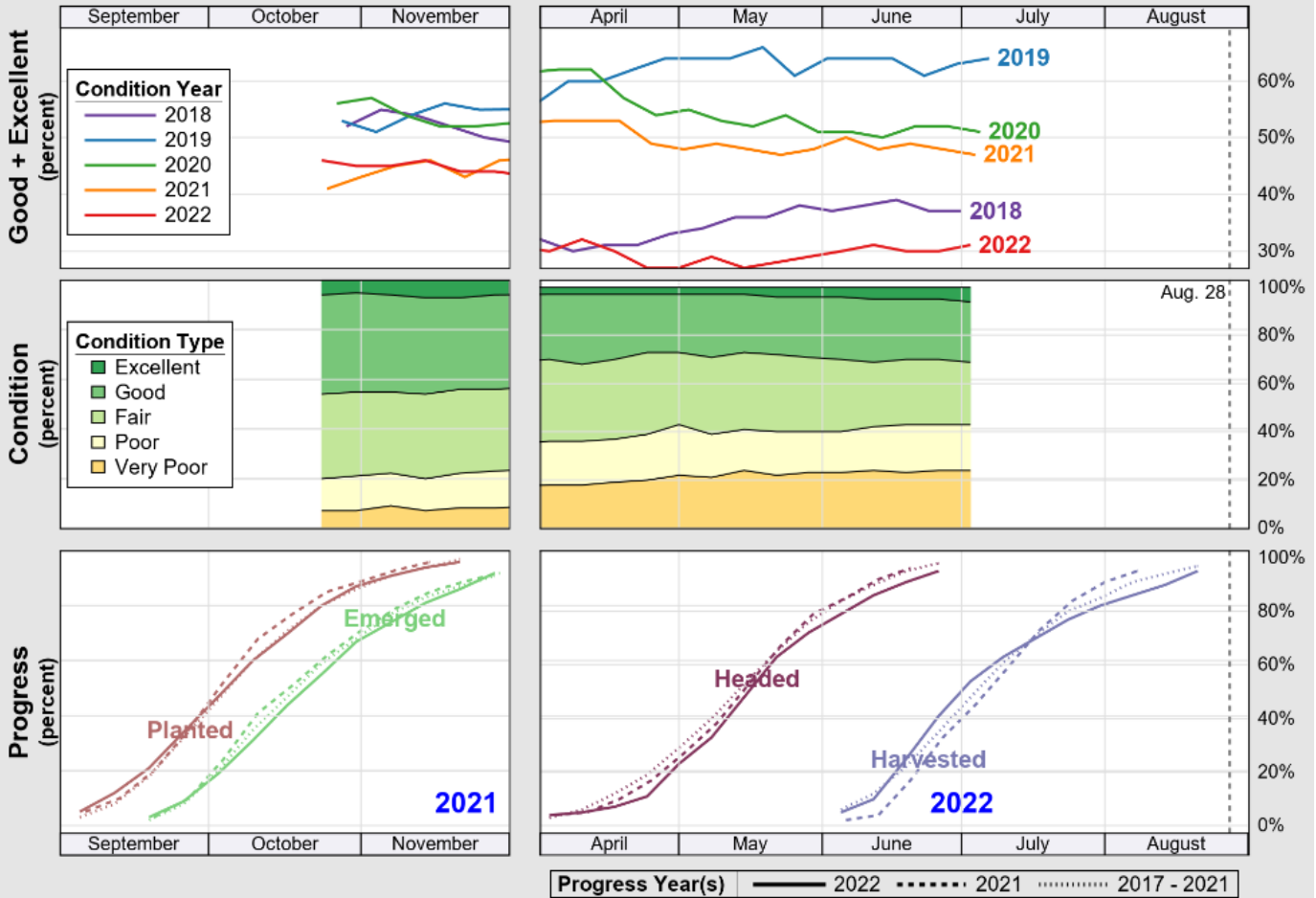
\*All 457 samples are in various stages of testing.

The information contained herein is provided as a public service with the understanding Plains Grains, Inc. (PGI) makes no claims, promises, or guarantees about the absolute accuracy, completeness, or adequacy of the contents and expressly disclaims liability for errors and omissions in the contents. PGI may make changes to information at any time and add to, remove, update, or correct the information provided. While PGI attempts to maintain the highest accuracy of content, it makes no representations or warranties as to the completeness or accuracy of the information and data. Individuals accessing this website will make their own determination of how suitable the information and data is for their usage and intent. In no event will PGI be responsible for damages resulting from the use or reliance upon this information and data. PGI does not warrant that the use of this information is free of any claims of copyright infringement.

USDA

# Crop Progress and Condition: Winter Wheat in United States , 2022

NASS

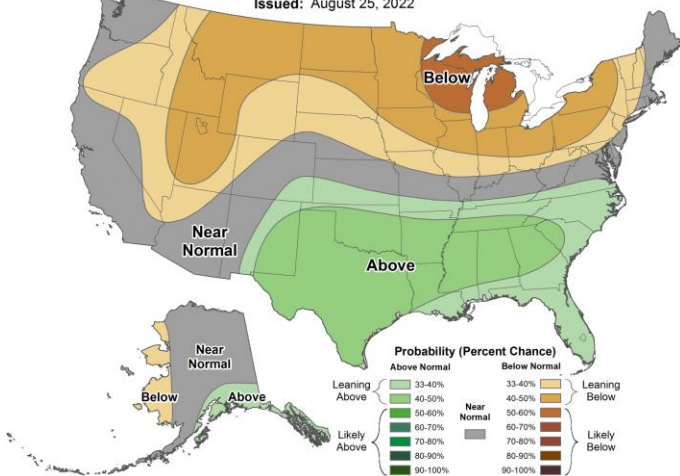


Source: National Agricultural Statistics Service (NASS), Crop Progress Report



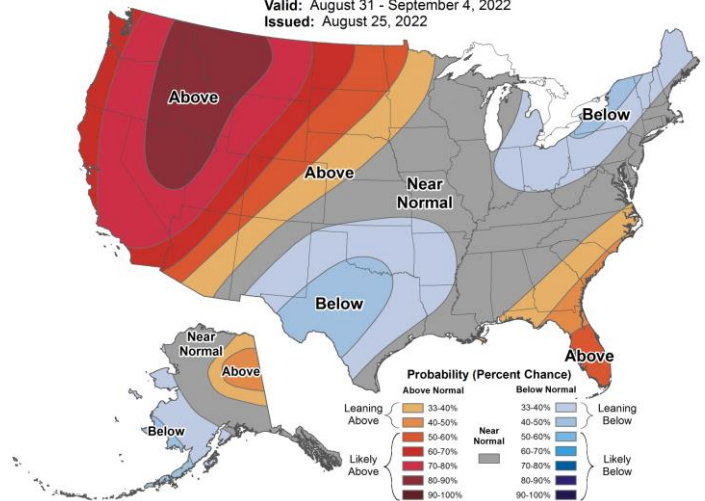
## 6-10 Day Precipitation Outlook

Valid: August 31 - September 4, 2022  
Issued: August 25, 2022



## 6-10 Day Temperature Outlook

Valid: August 31 - September 4, 2022  
Issued: August 25, 2022

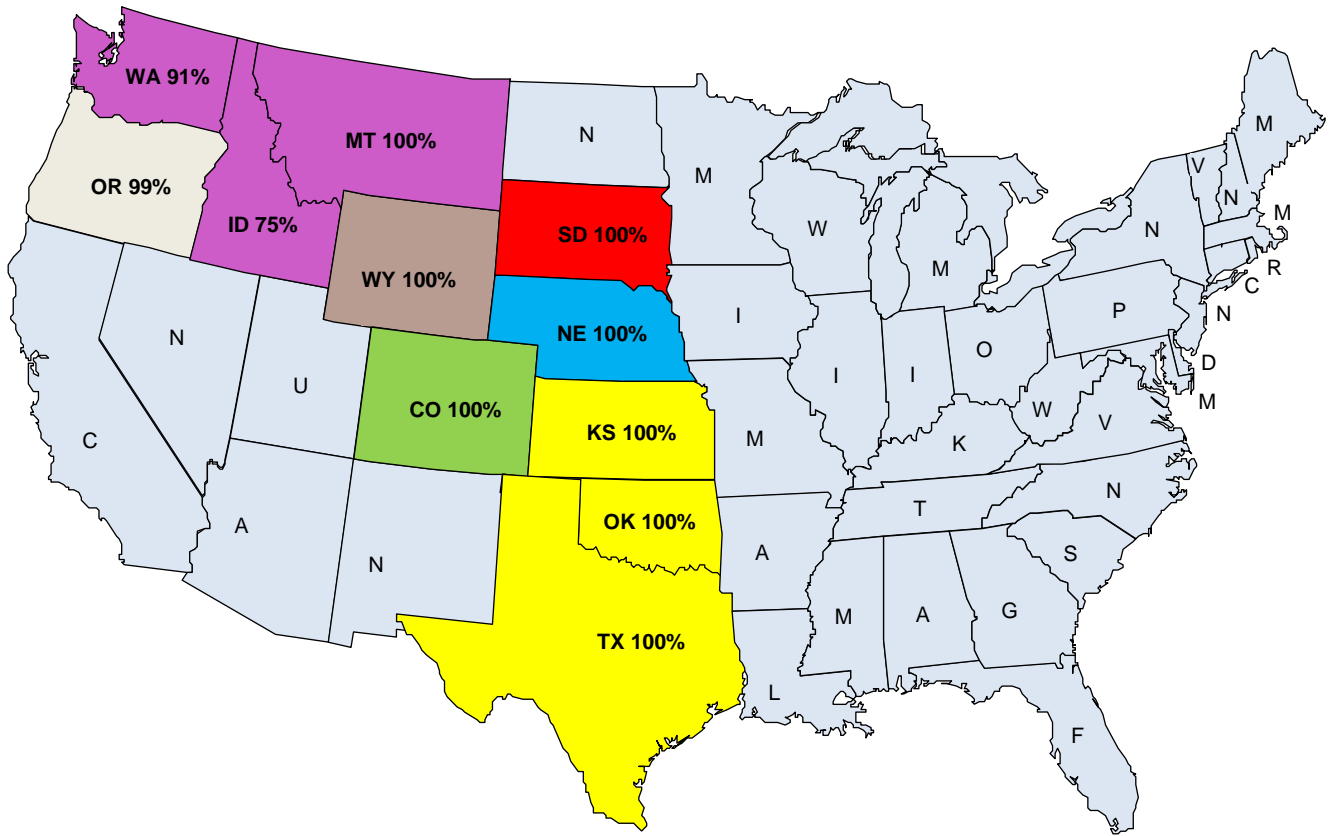


## September 1, 2022

1. **Texas** – Planting, pasture went a few weeks ago. Statewide rains. 6-8 inches, significant.
2. **Colorado** – Rain needed, some planting for 23. Drought in NE state (D2 – D4). SE, spotty showers past 10 days. Hot/dry through September 10. Tight seed supply.
3. **Wyoming** – Trying to plant, dry so waiting. Sold out of seed since August 15<sup>th</sup>. Moisture needed.
4. **South Dakota** – HRW: Harvest complete. Strong milling quality, good protein, no disease issues. Planting 2023 crop mid-September. HRS: 92% harvested. Strong milling quality/good prot. Isolated ergot issues with early harvested fields. NASS projects HRW 760,000 acres harvested, 39.9 mln bu, 52 bu/ac. HRS: 730,000 acres harvested, 32.1 mln bu, 44 bu/ac.
5. **Minnesota** – Harvest going well, 100% done in southern, northern less than 10%. Above avg. yields, no FN issues, good TW 13.8-13.9% pro. 10 day forecast great weather. Protein slightly below 2021.
6. **North Dakota** – about 1/3<sup>rd</sup> harvested vs. 2/3<sup>rd</sup> avg. Mostly good yields (50-70 bu +) some variability. No quality concerns. TW 60-64 lb, Protein slightly low 12.5-16, but mostly 13.5-15 range. Isolated vomitoxin/ergot, not widespread. Durum 40-65 TW, no quality issues, concerns over later planted crop. Overall good reports. Protein slightly below 2021 – but avg. (2021 abnormal).
7. **Montana** – Above avg. temps (90s-100s). Grasshoppers. Spring 42% G-E, yields 20-30 on recrop/ 40-50 on fallow ground. High protein (HRW – 12-13%), HRS 14-16%. 75% Spring harvested, winter basically done, some planting (2%). Durum – yields 540 bu/ac, 61% harvested, slightly above avg.
8. **Idaho** - Good crop, high yields, lower than expected TW. Some FN issues for later grain. Planting on dry farms. Spring 50% complete vs. 69% avg. Winter 67% vs. 94% avg. Trace precip. Outlook hot/dry.
9. **Washington** – Winter 85% harvested, spring 61% harvested. Some seeding. Gov't sample testing results: SW (1654) avg. 9.89% pro, 60 lb TW. Club (29 samples) avg. pro 10.47%. (very low moisture). TW over 61.58, HRW 1300 samples, avg. pro 11.51%, 61.25 lb/bu TW. HRS (1,111 samples) 13.93% pro, 61.23 lb/bu TW.
10. **Oregon** – Winter 98% complete. Higher elevation may harvest until mid-Sept. Some planting. Overall quality/quantity looks great.
11. **USDA/ARS/Plains Grains/NASS** – 460 samples in lab. Dockage 0.5, TW, 60.6 (slightly above 60.3 2021). Damage kernel totals, double last year. 2.2 vs. 1.7% in 2021. Most notable is overall protein content avg. 12.9 vs. 12.0 in 2021, and 11.9 in 2020. L 57.1%, M 41.4%. 1000 KW 30.4 g, kernel diameter 2.57 mm vs. 2.58 2021. Hardness 65 vs. 61.1 2021. FN 341.6 vs 368 in 2021. Composites: Milling out to 70, data for 56 (OK, TX, KS, NE, SD, WY, CO) remaining all from MT. Avg. flour yield 78, ash 0.53, weakness in wet gluten numbers. Overall avg. 29.4, like to see above 30. Min/max variability, as low as 20.5 as high as 41.2. Glute indexes prefer above 95, avg. 94.8, variability (high 99.6, low 59.3). Absorption 58.8, development times 5.48, times 8.89, max 13.2 min 5.7. Mixograph – water absorption 64.1, mix times slightly higher (3.84). tolerances to overmixing, slightly below 2021, 2.93 vs. 3.11. Overall avg. loaf volume 920 cc vs. 889 2021. Very strong relationship with protein content, predicting functionality for loaf volume. 45 samples of PNW HRW – avg. TW 61.8, protein 11.2%, wet gluten 24.5, 1000 KW 33.6, avg. hardness 67.4. Significant variability in protein content. Mark Hodges – Across the board averages, some very low FN (heavy rains), really affected damage kernels, will see how weighting factors look. Numbers will not look the same once the weighting factors are applied.
12. **Wheat Marketing Center** – 341 samples. 5 year avg 437. Good TW, similar to avg. at 61. Moisture 8.9, protein 9.4%, 5 year avg. 10%. Good FN and 1000 KW, kernel diameter. Club, similar protein, much lower moisture (7.8), good FN and 1000 KW 30.3 g (slightly below avg.). Similar kernel size. HRW/HRS – lower protein vs. 5 year avg. Waiting for WA samples.
13. **North Dakota State University** – Overall about 10 days behind harvest.

# Percent HRW Harvested by State

September 2, 2022



# United States: Winter Wheat Production

