

# Harvest Summary of HRW August 5, 2022

By Mark Hodges, Executive Director, Plains Grains, Inc.

<u>State</u>	<u>Percent Complete:</u>
○ Texas	100%
○ Oklahoma	100%
○ Kansas	100%
○ Colorado	99%
○ Nebraska	97%
○ South Dakota	82%
○ Montana	41%
○ Washington	18%
○ Oregon	41%
○ Idaho	15%
○ Wyoming	99%

Hot, dry, and windy weather continues to be the dominate factor of the 2022 HRW wheat harvest. The states of Colorado (99%) complete, Nebraska (97%) complete, Wyoming (99%) complete are all but done. South Dakota is also winding down quickly, now at 82% complete. Montana also made major progress this week now approaching half done at 41% complete. The Pacific Northwest states also made significant progress this week, again as hot and dry weather continues to prevail. Washington is now 18% complete, Idaho now 15% complete and Oregon at 41% complete.

There have now been 457 samples pulled and sent to the lab for evaluation across 34 grainsheds and 8 states. Of those 457 there are 432 in various stages of evaluation for mill/dough/bake properties as well as kernel characteristics. Of the samples now in the lab there have been 40 composites formed by (low/medium/high) protein and by grainshed. The results of testing to this point are shown in the table below as a summary of kernel information. Additionally, very early flour yield on the first 24 composites (TX, OK, KS) are ranging from 77%-78%, Test Weight 60.5 lb/bu, size distribution L 56.8%, M 41.7%, S 1.5%, single kernel – 30.3 TKW. Hardness 64.5, ash 1.6 on 12% MB.

Test weights continue to be very good, average above 60 lb/bu (now 60.5 lb/bu) with protein still averaging 12.9% as measured by FGIS. Dockage increased slightly this week to 0.5% (as a result after rounding up from 0.46% average). Early overall loaf volumes (first 8 samples) are exceeding expectations, averaging 925cc overall.

Below the August 5<sup>th</sup> data are the number of samples now tested/total projected for each testing parameter.

## July 29, 2022

Tst	Exp	MST	Pro %	DKG	TKW	FN	Grade	Test Weight	FM	DMG	S&B	DEF
406**	520	10.7	12.9	0.4	30.3	333	HRW 1	60.6 79.6	0.2	0.6	1.0	1.8

\*All 406 samples are in various stages of testing.

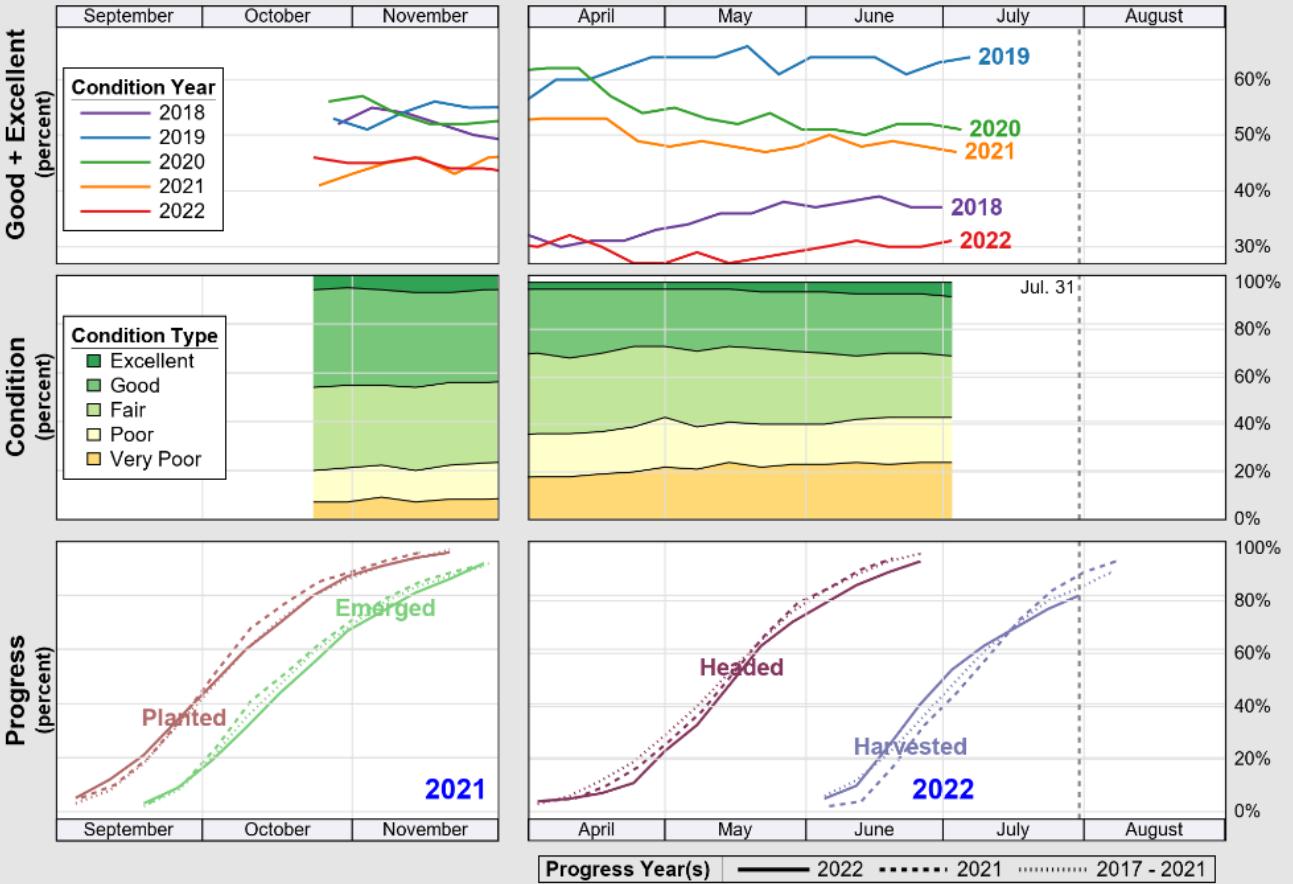
## August 5, 2022

Tst	Exp	MST	Pro %	DKG	TKW	FN	Grade	Test Weight	FM	DMG	S&B	DEF
457**	520	10.7	12.9	0.5	30.3	339	HRW 1	60.5 79.6	0.2	0.6	1.1	1.9

\*All 457 samples are in various stages of testing.

N=		372/520	372/520	372/520	432/520	404/520	372/520	372/520	372/520	372/520	372/520	372/520
----	--	---------	---------	---------	---------	---------	---------	---------	---------	---------	---------	---------

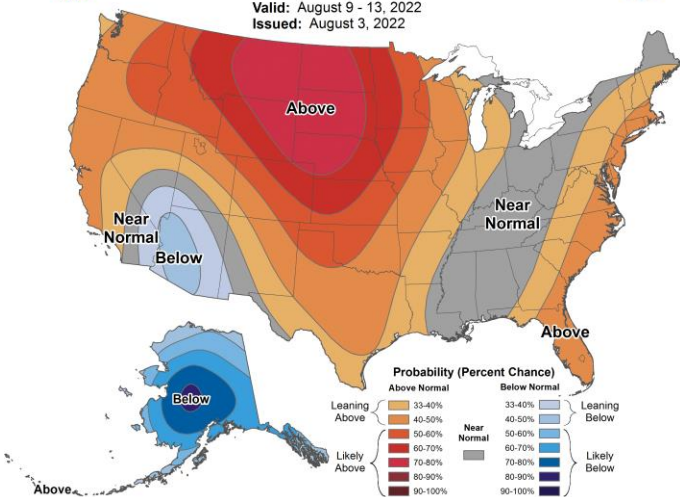
The information contained herein is provided as a public service with the understanding Plains Grains, Inc. (PGI) makes no claims, promises, or guarantees about the absolute accuracy, completeness, or adequacy of the contents and expressly disclaims liability for errors and omissions in the contents. PGI may make changes to information at any time and add to, remove, update, or correct the information provided. While PGI attempts to maintain the highest accuracy of content, it makes no representations or warranties as to the completeness or accuracy of the information and data. Individuals accessing this website will make their own determination of how suitable the information and data is for their usage and intent. In no event will PGI be responsible for damages resulting from the use or reliance upon this information and data. PGI does not warrant that the use of this information is free of any claims of copyright infringement.



Source: National Agricultural Statistics Service (NASS), Crop Progress Report

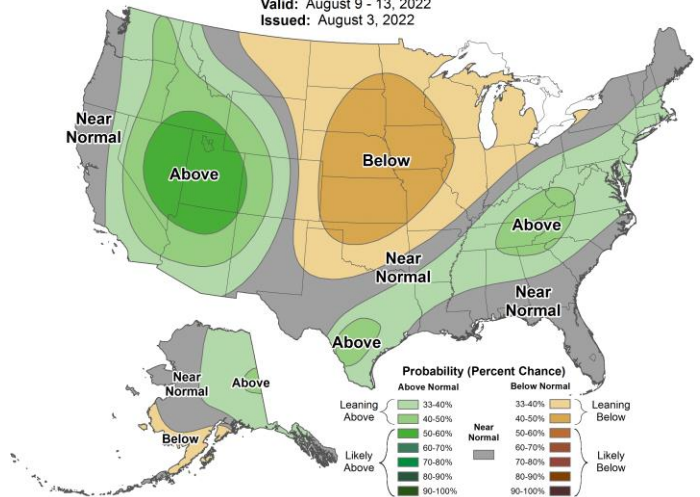
6-10 Day Temperature Outlook

Valid: August 9 - 13, 2022  
Issued: August 3, 2022



6-10 Day Precipitation Outlook

Valid: August 9 - 13, 2022  
Issued: August 3, 2022



# States Update:

August 4, 2022

1. **Kansas** – Turning to plantings. Drought in W, South Central, SE state. NE KS looks decent. Pleased with functionality of crop, overrun with protein.
2. **Wyoming** – 95% complete. Variable yields. Low of 13.7% -17.8% protein. Irrigated – lower TW, 56 lbs (early freeze damage).
3. **Colorado** – NASS 99% harvested. Good rain past week (1-4 inches)/slight improvement in drought monitor.
4. **North Dakota** – Crop progressing. Pockets of fusarium. Some areas still 4-5 weeks out from harvest. NASS to resurvey spring/durum acres. Wheat tour est. 49 bu/ac, USDA 51 bu/ac. 2-3 weeks out from harvest for spring. Durum 3-4 weeks out.
5. **Montana** – Hot/dry/windy/smoky. Durum 1% Harvested, spring 5%, winter 32%. Lower yields/decent quality (seen 13% pro, 62 TW).
6. **South Dakota** – HRW: Harvest complete. Good crop quality, no disease. Planting mid-September. HRS: est. 50% harvested. High pro. High temperatures this week (100+). G/E 56% (reduced from 68% last week). Variable results dependent upon geographical location and drought vs. delayed planting due to wet conditions. Early elevator report – winter: 13.1% protein, spring 61 TW, protein 15.3.
7. **Nebraska** – Northern Panhandle waiting on hail damaged crop. Expect to be finished in next 7-10 days. Yields down, sawfly pressure/barley yellow dwarf. Est. overall yield to be down. 32-34 mln bu range (about 10 mln below 2021).
8. **Idaho** – Slow harvest, rainfall across southern state. Quality concerns for spring - heatwave during grain fill. Higher than avg. yields with increased TW, lower pro. NASS 14% harvested winter, 5% spring. Winter: 67% G-E, spring: 63% G-E. 100+ temps.
9. **Oregon** – NASS 36% harvested vs. 57% avg. Favorable weather for harvest. Limited impacts from wildfires. Avg. – above avg. yields, good quality (low pro, high TW). G/E: 67%, F: 29%, P/VP: 4%. Harvest started late, but catching up hot/dry.
10. **Washington** – 10% harvested for winter vs. 39% avg. spring 1% harvested. Hot/dry weather. Winter 19% E, 57% G. Spring 14% E, 83% G, 3% F.
11. **Ohio** – Yields have been pushing the 90 bu/ac mark. Wheat damaged by wind storms June - yield reduction.
12. **USDA/ARS** – NASS 457 samples, received 432 in lab. NASS projecting 492 samples total. TW 60.6, L 56.8, M 41.7. Protein down 1/10<sup>th</sup> to 12.8%, 1% above 2021. Single kernel – 33.3 mg, 30.3 1000 KW. Hardness 64.5, ash 1.6 on 12% MB. Composites 40 samples so far. Flour yield 24 composites (TX, OK, S central KS) – holding in 77-78%, ash 1.54 on 12% MB, TX/OK stability times below 10. S/Central KS stability times reached 10 mins, may be some strength issues regarding overmixing. Improvements in mixing tolerance (0-6 scale – seeing 3 and 4), 3.5-4 min mix times. Samples coming in from MT. 40 composites from Gulf (expect 49).

13. **GPAL** – SRW complete. 230 samples. Year over year everything similar except FN. 322 FN avg. bs 2021 274. Vomitoxin similar, flour, ash, wet gluten similar to 2021. Bake volume slightly above 2021. Cookie ratio 10.87 vs. 10.67 in 2021. Farinograph 51.4 vs. 52.2 2021. TW 59.9 vs. 59.5 2021. Overall graded as #2.
14. **WMC** –38 samples, 19 HRW some HRS from PNW, some SW. No club yet. Seeing lower protein so far. TW/kernel size 1000 KW above 2021.
15. **BNSF** – Not anticipating railroads to go on strike. PEB (presidential emergency board) enacted.
16. **Brian Walker** – Successful Spring Wheat tour. All returned safely and with new experiences. Crop looks great but a long way to go getting into the bin.

## *Percent HRW Harvested by State*

*August 4, 2022*

