

Harvest Summary of HRW July 29, 2022

By Mark Hodges, Executive Director, Plains Grains, Inc.

<u>State</u>	<u>Percent Complete:</u>
○ Texas	100%
○ Oklahoma	100%
○ Kansas	100%
○ Colorado	91%
○ Nebraska	89%
○ South Dakota	73%
○ Montana	23%
○ Washington	9%
○ Oregon	19%
○ Idaho	4%
○ Wyoming	85%

The HRW wheat harvest has moved very quickly over the past week with Colorado (91%), Nebraska (89%), Wyoming (85%) and South Dakota (73%) completed. Combines continue to roll as well further north through Montana (23%) and Pacific Northwest states of (Washington 9%), Oregon (19%) and Idaho (4%) of harvest completed. Sampling is also now complete in Texas, Oklahoma, and Kansas. Final samples are currently in-route from the Nebraska Panhandle, South Dakota and Wyoming to the lab for evaluation. HRW harvest is just now in full swing in the Pacific Northwest states as hot and dry weather continues to prevail. Montana, Washington, Idaho and Oregon all continue to expect average to above average yields and quality vs 2021.

The 2022 HRW wheat harvest continues to see very little disease or weed pressure being reported in this crop (in all states) and was not surprising considering the abnormally dry conditions during all stages of crop development. Insect damage has also been sparse in 2022 apart from damage due to sawfly and grasshopper infestations in NE Colorado and SE Wyoming.

Test weights continue to average above 60 lb/bu (now 60.6 lb/bu) with protein averaging 12.9%. There are now 406 samples in the lab and in various stages of testing. This crop overall continues to have very low dockage (0.4%) with very good (and uniform) kernel characteristics. Very early milling data from southern areas indicating a crop that as is sound with very good milling and baking characteristics. While development times are shorter than desired, overall loaf volumes are exceeding 850cc with some as high as 950cc.

July 22, 2022

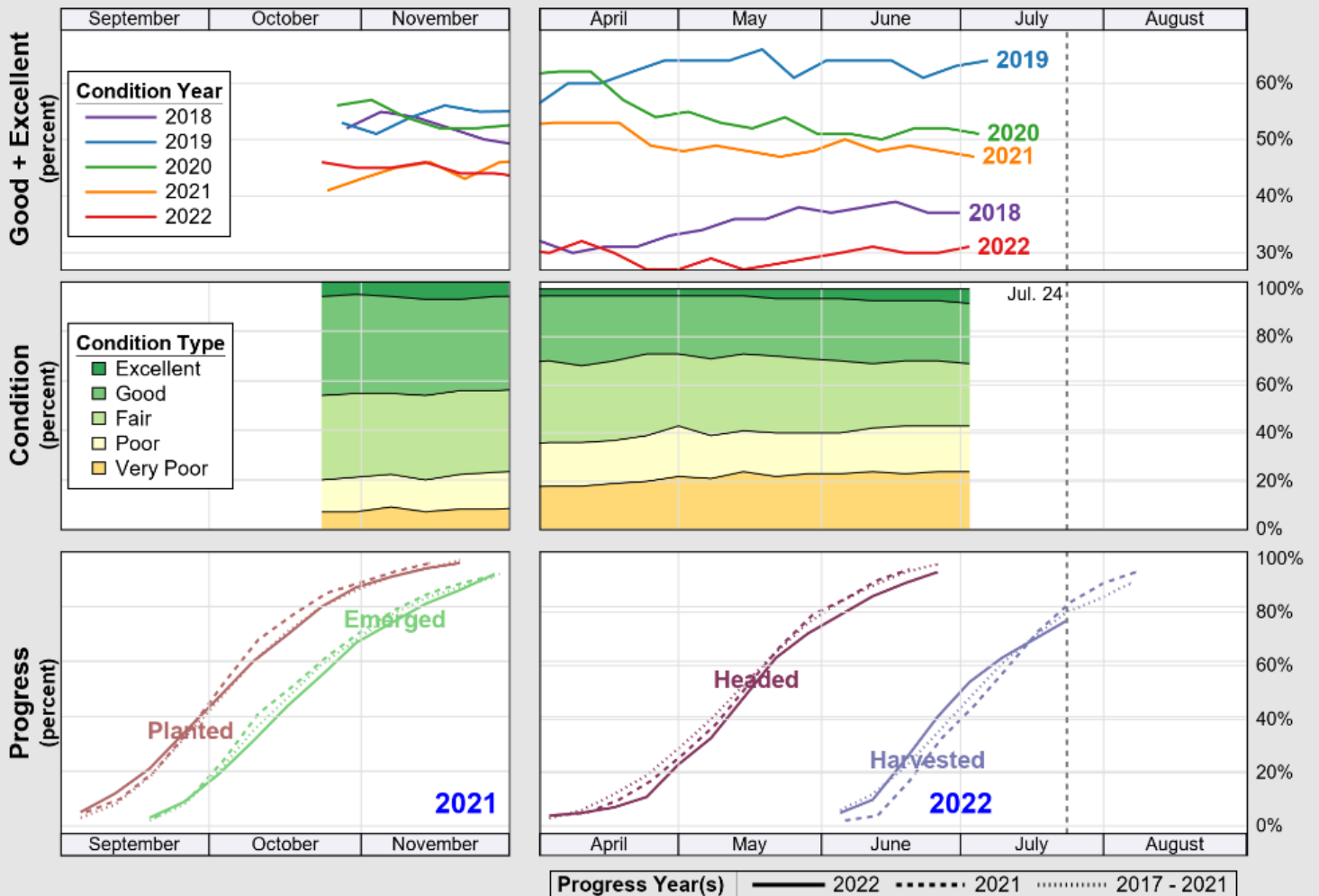
Tst	Exp	MST	Pro %	DKG	TKW	FN	Grade	Test Weight	FM	DMG	S&B	DEF
360	520	10.6	13.3	0.4	30.1	330	HRW 1	60.5 79.6	0.1	0.6	1.0	1.7

July 29, 2022

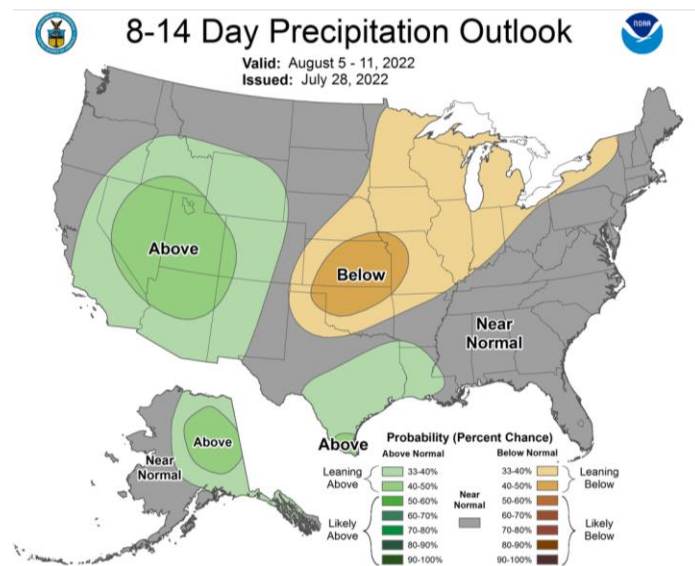
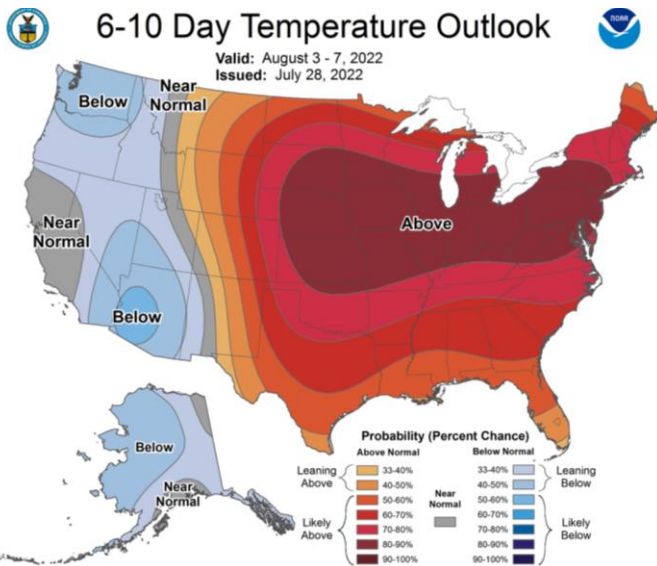
Tst	Exp	MST	Pro %	DKG	TKW	FN	Grade	Test Weight	FM	DMG	S&B	DEF
406**	520	10.7	12.9	0.4	30.3	333	HRW 1	60.6 79.6	0.2	0.6	1.0	1.8

*All 406 samples are in various stages of testing.

The information contained herein is provided as a public service with the understanding Plains Grains, Inc. (PGI) makes no claims, promises, or guarantees about the absolute accuracy, completeness, or adequacy of the contents and expressly disclaims liability for errors and omissions in the contents. PGI may make changes to information at any time and add to, remove, update, or correct the information provided. While PGI attempts to maintain the highest accuracy of content, it makes no representations or warranties as to the completeness or accuracy of the information and data. Individuals accessing this website will make their own determination of how suitable the information and data is for their usage and intent. In no event will PGI be responsible for damages resulting from the use or reliance upon this information and data. PGI does not warrant that the use of this information is free of any claims of copyright infringement.



Source: National Agricultural Statistics Service (NASS), Crop Progress Report



States Update:

July 28, 2022

1. **Oklahoma** – Extremely dry. Trace moisture reported. Extreme wildfire conditions. USDA 72.9 MLN bushels, 38% lower vs. 2021. Planting conditions concerns. Slightly lower temps forecast. 50 days of 100+ temps.
2. **Colorado** – 88% harvested beginning of week. Some rains so slowing down. Higher level irrigated left to harvest. NE Colorado moisture today – good for planting. Seed could be short on certain varieties.
3. **Wyoming** – Est. 85% harvested. Dryland almost complete. Irrigated harvest early next week. Dryland yields ranging 14-26 bu/ac, minimal reports of 30 bu/ac. Avg. yield est. 30 bu/ac +/- . TW most above 60 lbs/bu, 12.5-13.0% protein range with limited reports of proteins exceeding 15%. Thinking about planting – most counties in D2 with some in D3 drought.
4. **Nebraska** – Harvest ending, variability. Good pro, decent TW. Quick/dry harvest. Not a lot of wheat. Finishing Panhandle 15-25 bu/ac yields (expect smaller kernel diameters). Production/yields down. Seed wheat prices very high.
5. **South Dakota** – HRW NASS 64% harvested vs 53% avg. moving rapid, high temps. Mid 80s-90s b/ac in some areas, moving West some drought/hail. Most of wheat belt 60-80+ bu. Elevator report, 13.2% pro, 11% moisture. Spring NASS 11% harvested vs. 14% avg. 65% G-E. high pro (16%+).
6. **Idaho** – 2% harvested vs. 27% avg.. WW 70% G-E, SW 63% G-E. So far good quality, TW and low protein. Stretch of triple digits/90+ temps. No rain forecast.
7. **Montana** – Winter 18% harvested. 13% avg. pro so far. Expect early crop to be higher pro. Hot/dry. Spring wheat, barley and durum are turning color rapidly. Catching up to average. Expecting good winter wheat planting conditions / more HRW planted for 2023.
8. **Oregon** – Elevator reports showing very good quality, low pro, high TW. Most fields cutting avg to above avg.
9. **Washington** – Winter 5% harvested vs. 23% avg. Spring 96% headed. Crop looks very good. High TW, low proteins. Winter – 19% E, 53% G, 24% F, 3% P. Spring 10% E, 86% G. Really hot (100+ degrees).
10. **Minnesota** – Expect harvest during Labor Day. 0% Poor, 28% F, 72% G-E. Southern state moisture/slightly dry. Northern more wet. Cooler weather, hot temps next week.
11. **USDA/ARS/PGI/NASS** – 396 samples (NASS). 406 Samples in the lab, composites for TX, OK, KS. TW – 60.8 lbs (61.2 2021), Kernel size L – 56.6%, M - 49.9 % Protein: 12.9%. Kernel weight – 30.3, diameter 2.56 (2.58 2021). FN – 333 (368 2021). TX grain sheds: H, M, L splits for protein, absorption good (above 60%), mixograph mix times on the short side. Mixing tolerance running below 3 (0-6 score). Farinograph – lower percent absorptions, stability times low (all below 10, lowest being 5.7) avg. 7 minutes. Development times short, 5-6 min range. Bake data: avg. 64-65%, short mix times, loaf volumes meeting 850 cc target value (some above that 950 cc range). Good protein quantity, shorter mix times, good absorption, above avg. loaf, not a lot of strength for overmixing. Yellow crumb color. 34 composites,. will have more data on OK/KS next week.

12. **WMC** – just received 1 SW, 5 HRW, and Spring wheat samples. 1 HRW sample - 5.8% wet gluten value (others look good).
13. **GPAL** – 229 samples. FN avg 328 vs. 294 in 2021, 309 5 year avg. Protein similar to 2021/ avg. TKW below 2021, similar to avg.. Vomitoxin below 2021. Flour data, milling yield, flour ash, bread volume and cookie ratios are all pretty similar to 2021.

Percent HRW Harvested by State
July 29, 2022

