

PGI HRW Harvest Report July 9, 2021

By Mark Hodges, Executive Director, Plains Grains, Inc.

<u>State</u>	<u>Percent Complete:</u>
Texas	92%
Oklahoma	95%
Kansas	73%
Colorado	11%
Nebraska	16%
South Dakota	8%
Montana	0%
Washington	0%
Oregon	4%
Idaho	5%
Wyoming	0%

7/8/2021: HRW harvest progress was slowed again this week due to scattered rain showers and high humidity either keeping combines out of the field or only allowing a late afternoon start. These conditions prevailed all the way from Texas to Nebraska keep all states behind the 5-year average percent harvested acres for this date historically.

Texas and Oklahoma continue to wind down the 2021 HRW wheat harvest (92% and 95% respectively). The remaining acres in eastern and southern areas of both states not cut yet are potentially facing quality issues from too much rain and high humidity as lower test weights. Some limited sprout damage has been reported in both states.

Kansas, (now 73% complete with harvest) with most acres remaining to be cut in the northwestern areas of the state. As is the case in Texas and Oklahoma, rain and its effect on quality continues to be a concern for the remain acres to be harvested in Kansas with some sprout damage being reported.

There are now 188 samples in various stages of testing with kernel data still being the most current. Overall, average yields are still being reported to range generally between 40 bu/ac (2.69 tons/ha) to 60 bu/ac (4.0 tons/ha). Test weight is averaging 62.0 lb/bu (81.5 kg/hl) although some areas continue to see reduced test weights because of the continued rain showers. Protein is averaging 11.0% overall with average TKW at 32.3g. Dockage average over all 188 samples is 0.5%. Average Falling Number this week is 283 seconds.

There are now 188 samples in the USDA lab originating from Texas/Oklahoma/Kansas. Subsamples are in route to a FGIS lab for grading (grading information for first 114 samples)

July 9, 2021 (**adjusted)

Tst	Exp	MST	Pro %	DKG	TKW	FN	Grade	Test Weight	FM	DMG	S&B	DEF
188	500	10.8	11.0	0.5	32.3	283**	1HRW	62.0 81.5	0.4	0.3	0.8	1.5

July 2, 2021 (*Test weight and protein are determined by NIR.)

Tst	Exp	MST	*Pro %	DKG	TKW	FN	Grade	Test Weight	FM	DMG	S&B	DEF
146	500	10.5	11.2		32.6	286	1HRW	63.2 83.1				

2020 Final

Tst	Exp	MST	Pro %	DKG	TKW	FN	Grade	Test Weight	FM	DMG	S&B	DEF
431	500	10.9	11.9	0.5	31.6	367	1HRW	61.7 81.1	0.2	0.2	1.1	1.5

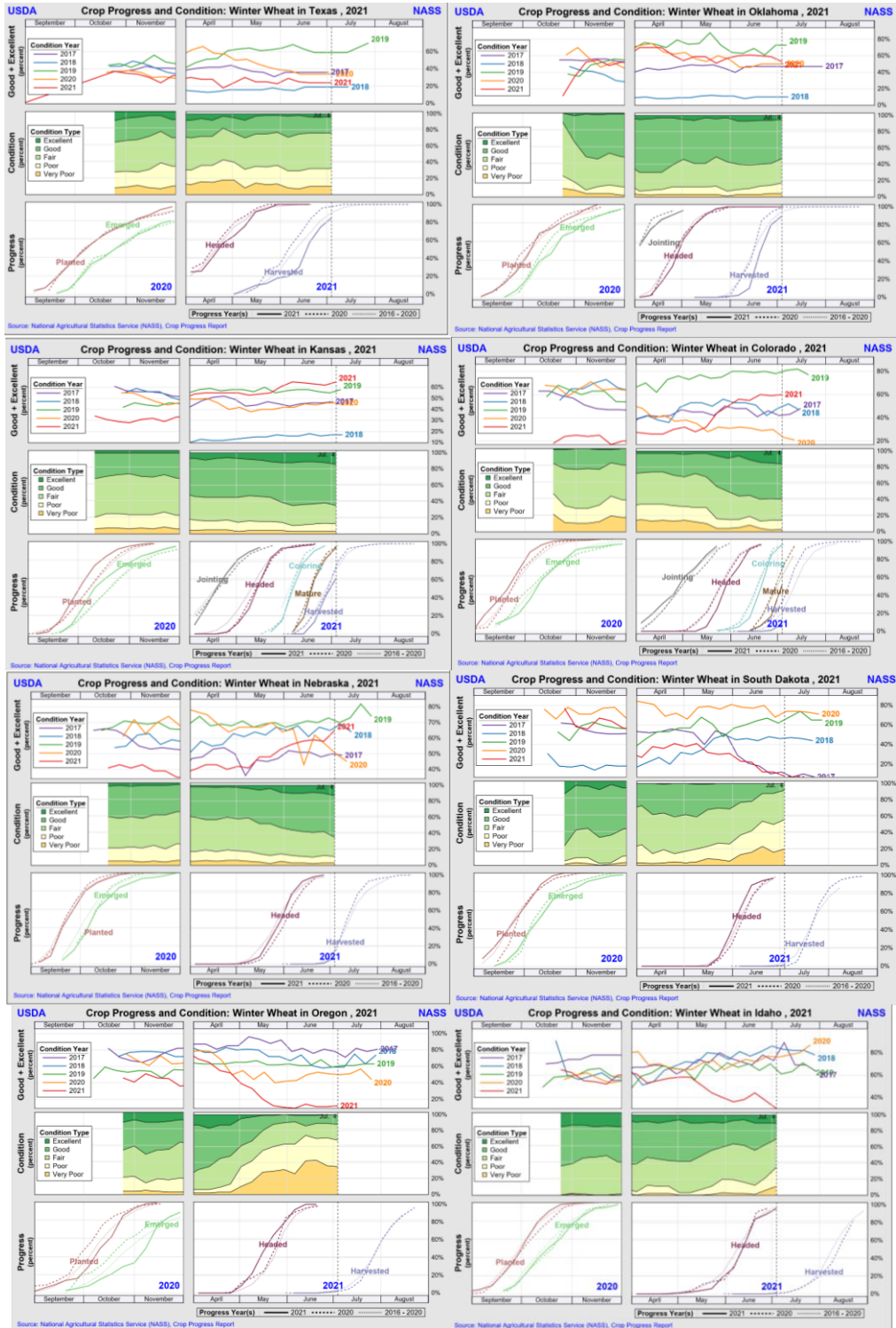
The information contained herein is provided as a public service with the understanding Plains Grains, Inc. (PGI) makes no claims, promises, or guarantees about the absolute accuracy, completeness, or adequacy of the contents and expressly disclaims liability for errors and omissions in the contents. PGI may make changes to information at any time and add to, remove, update, or correct the information provided. While PGI attempts to maintain the highest accuracy of content, it makes no representations or warranties as to the completeness or accuracy of the information and data. Individuals accessing this website will make their own determination of how suitable the information and data is for their usage and intent. In no event will PGI be responsible for damages resulting from the use or reliance upon this information and data. PGI does not warrant that the use of this information is free of any claims of copyright infringement.

July 8, 2021

Industry notes on harvest:

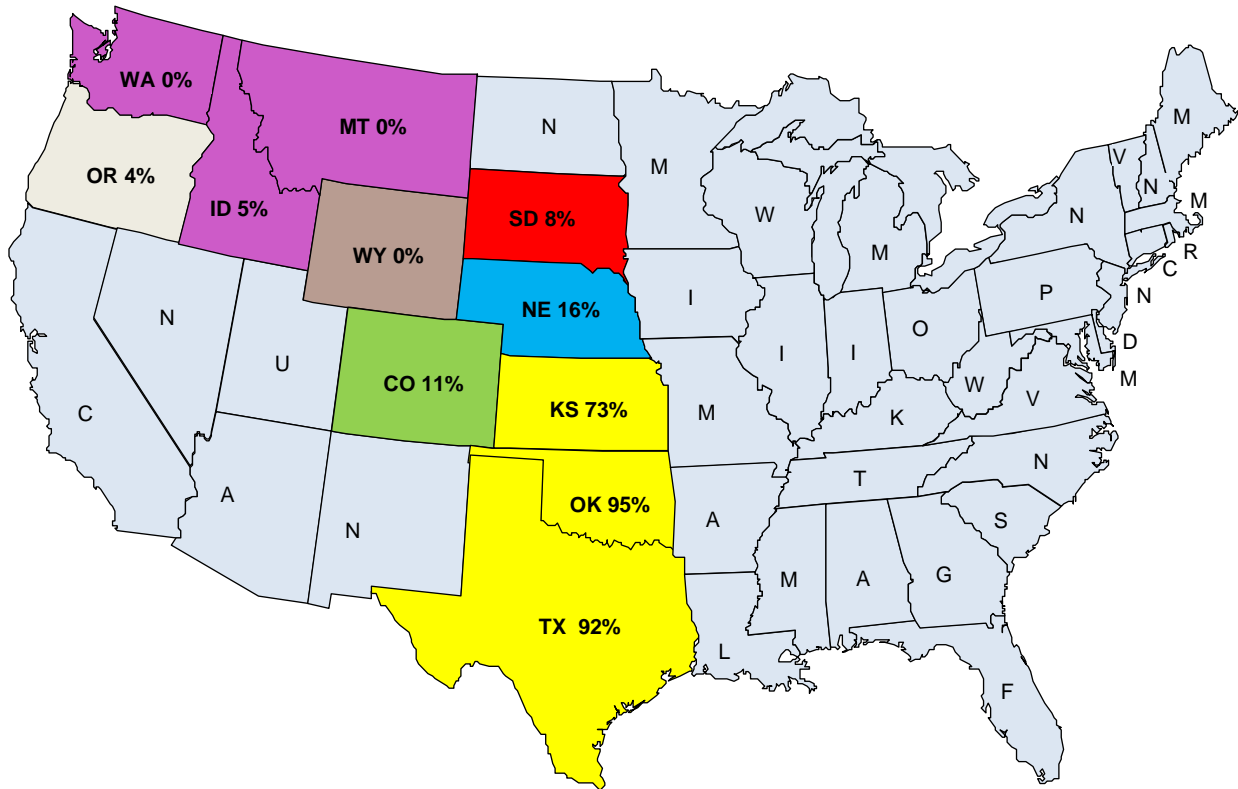
- **Texas** – Storms/rain. Harvest wrapping up soon. Protein varying across state. Overall good TW (except SRW); yields above avg.
- **Oklahoma** – 92% harvested. 8% of group in N Central and Panhandle hard to finish up – rains. Unusual rains in Panhandle region (14 days). Sprout damage in the final 8% (variety/location dependent) mostly to feed channels. Statewide avgs. good for TW, avg. pro statewide 11-11.1%.
- **Kansas** – Harvest slow – high humidity/rains. 75-80% harvested. Good yields in parts of W Central (50-70 bu/ac.) Limited sprout damage. Pockets of high pro (12s/13s), TW dropped off. Higher pro, lower TW. Feed demand high. State avg. 11-11.5% est.
- **Colorado** – Harvest slowly progressing. NASS 8% harvested Tuesday. Est. TW 50-61 lb, 8-10% protein. Yields 20-45 bu/ac yields. Northern state avg pro 10.7%. 95% humidity in SE CO, high. More test cutting, 100 degrees weather. Sawfly issues, worst seen - swathing.
- **Nebraska** – Harvest started, 7%. Panhandle some moisture past week (unusual); SW corner above avg. humidity. Dry across most state. Harvest in S. Central/S. East moving fast. Early quality data variable. Higher pro, smaller kernel size, lower TW. Seeing 55-63 TW, pro 10.5-14% (majority 11.15 -12%) lowest 30 bu/ac – highest 119 bu/ac – most 50-65 bu/ac.
- **Wyoming** – Test cutting next week. Expect harvest in 2 more weeks, green stems still. Irrigated wheat expect early August harvest. Some moisture last week, low humidity.
- **Montana** – Widespread rain early this week. Spring wheat 7% G-E. Hot and dry weather. Pockets of good crop, expect abandonment / haying. Some swathing – grasshoppers/sawfly. May freeze damage apparent. Durum thin stands, lower yields/production – hopeful for quality.
- **Idaho** – Very hot and dry. Harvest started, less than 5%. Good TW, some high pro samples, but some SW around 11% pro. No rain, entire state well above avg. temps (triple digits). Dry lightning last night, fires all over. No pest/disease issues.
- **Washington** – Harvest in dry areas. No official data yet, drought effecting yield and higher average protein could be expected. Triple digit heat, hot and dry continuing.
- **Oregon** – NASS has 68% poor – very poor; yields down more than expected. Pockets of decent crop. Early report of high pro for SW but seeing decrease. Some producers finishing next week, some fires across state. No disease/pest pressures. Decent spring (12% range).
- **Brian Walker** – Starting tests on TX HRW, some 11.5% pro on mill ran well, shorter stability. TX SRW crop damaged, lower falling numbers.
- **USDA/ARS** – Collecting feedback for Dashboard. 188 samples (TX, OK, KS); other states in process will be pulled as harvest moves. Falling number issues, most moving into feed lots. (113 samples) – av. TW 62 lb, max 65, min 58.8; kernel size (188 samples) – 73% L, 25% M, 1% SM; protein 11.3 avg. max 14.5, min 9.1; single kernel avg size 32, avg. diameter 2.7, kernel hardness 62, max 85 min 44, Falling number concerns (lows below 100). Variable quality. Water absorption 61, mix time 4.13, mixing tolerance 4. Lubbock – 13.7% pro, mix time 2.63, tolerance 1.

Crop Progress and Long-Term Averages



Percent HRW Harvested by State

July 9, 2021



Previous 7 Days Precipitation (Ending July 8, 2021)

