

Harvest Summary of HRW June 16, 2017

By Mark Hodges, Executive Director, Plains Grains, Inc.

<u>State</u>	<u>Percent Complete:</u>
○ Texas	74%
○ Oklahoma	68%
○ Kansas	12%
○ Colorado	0%
○ Nebraska	0%
○ South Dakota	0%
○ North Dakota	0%
○ Montana	0%
○ Washington	0%
○ Oregon	0%
○ Idaho	0%
○ Wyoming	0%

Harvest of the 2017 HRW wheat crop is in full swing for producers in the south central 1/4 of Kansas. Mostly favorable days for drying (above 95 degree temperatures (35 degrees C) with wind), has allowed harvest to move northward beyond the Kansas/Oklahoma state line this week, even with a few scattered rain showers. Harvest is in full swing in northern Oklahoma, rapidly winding down in central Oklahoma and is complete in the southern half of Oklahoma. Harvest ranges from just starting to a few days away in far northwest Oklahoma and far northwest Texas. All areas now harvesting have some green stems with ripe heads, this combined with high humidity and/or rain showers has not allowed combines in the field until mid-afternoon and only being able to cut until just after sundown before humidity rises to a point that making straw too tough to cut.

Texas is now 74% harvested, with central and north central parts of the state mostly completed while in full swing in the southern areas of northwest Texas. Oklahoma is now 68% complete with harvest, the major areas remaining to be cut are northern and far northwestern parts of the state. Test weights, on the average, continue to be above 60 lbs/bu (78.9 kg/hl) even with scattered rain events over the past week.

There are now 93 samples of an expected 530 in the lab representing very limited areas of extreme south central Kansas, Oklahoma (except the far northwest part of the state) and Texas (except for the northwest part of the state). Average protein remains at 10.8% this week. Average test weight decreased by 0.3 lbs. this week to 60.6 lb/bu from 60.9 lb/bu (79.7 kg/hl from 80.1 kg/hl) and can be attributed to rain showers over the past week. TKW average, with a limited number of samples tested, dropped this week from 30.3g to 29.8g and exceeds the overall composite 5-year average of (29.1g). The average FN is 362 indicating sound wheat.

June 16, 2017 *not all 93 completed

Tst	Exp	MST	Pro %	DKG	TKW*	FN*	Grade	Test Weight	FM	DMG	S&B	DEF
93	530	12.5	10.8	0.8	29.8	362	1HRW	60.6 79.7	0.3	0.1	1.0	1.4

June 9, 2017 *not all 65 completed

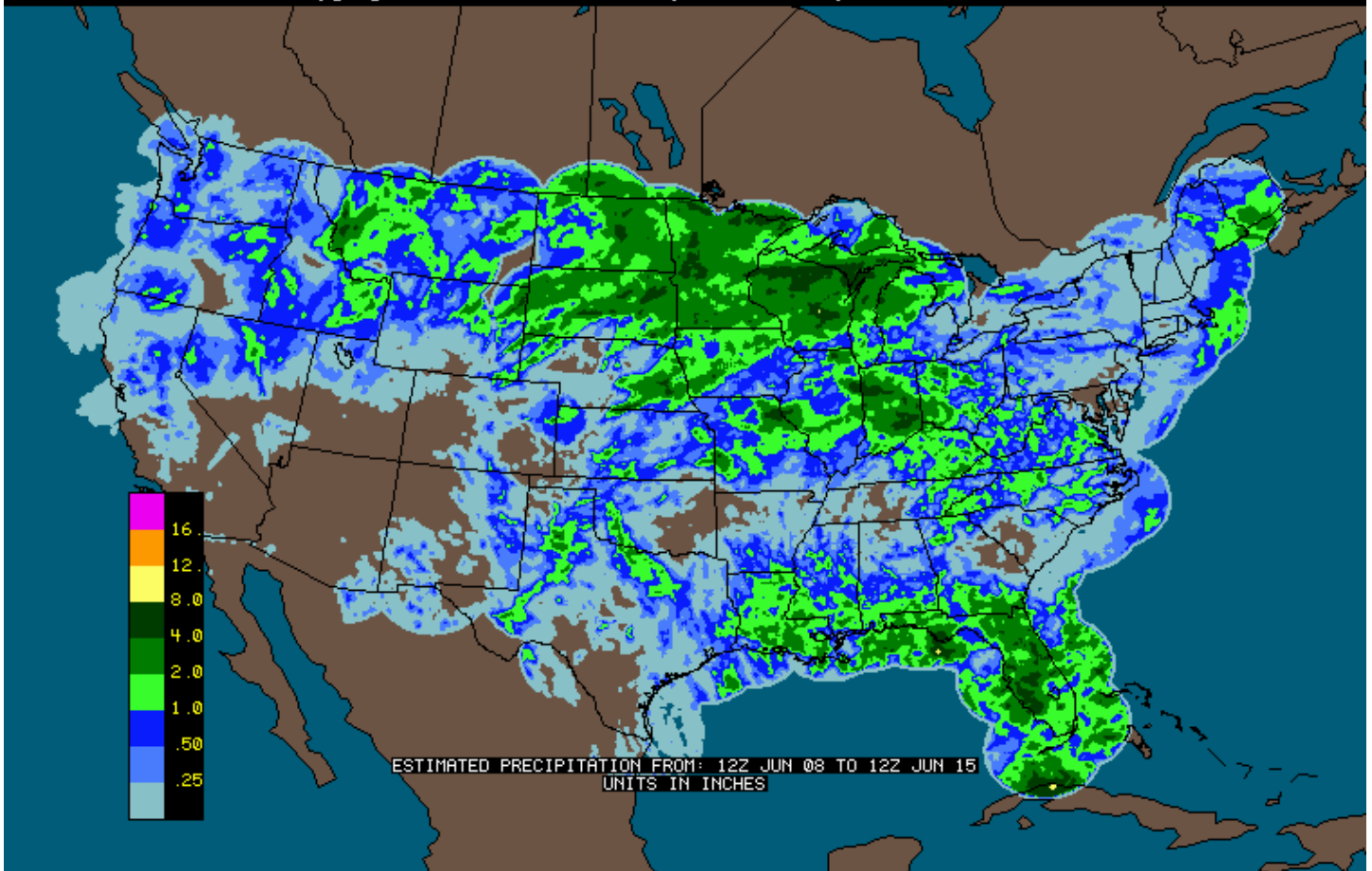
Tst	Exp	MST	Pro %	DKG	TKW*	FN	Grade	Test Weight	FM	DMG	S&B	DEF
65	530	12.7	10.8	0.8	30.3		1HRW	60.9 80.1	0.2	0.1	1.0	1.3

2016 Final

Samples

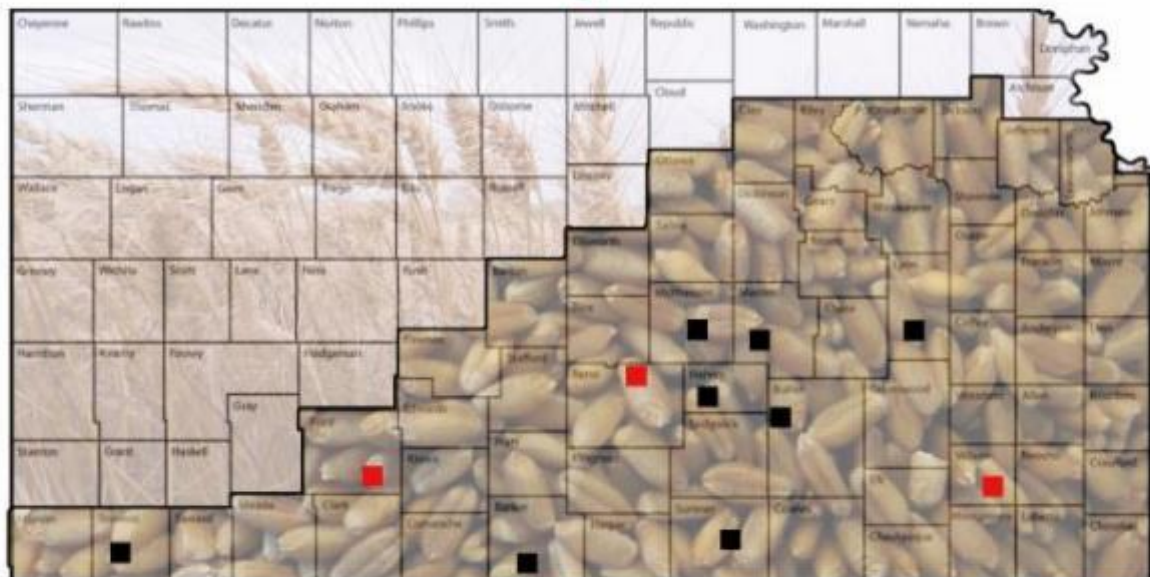
Tst	Exp	MST	Pro %	DKG	TKW	FN	Grade	Test Weight	FM	DMG	S&B	DEF
499	Final	11.0	11.2	0.6	31.9	392	1HRW	60.7 79.8	0.2	0.2	0.8	1.2

The information contained herein is provided as a public service with the understanding Plains Grains, Inc. (PGI) makes no claims, promises, or guarantees about the absolute accuracy, completeness, or adequacy of the contents and expressly disclaims liability for errors and omissions in the contents. PGI may make changes to information at any time and add to, remove, update, or correct the information provided. While PGI attempts to maintain the highest accuracy of content, it makes no representations or warranties as to the completeness or accuracy of the information and data. Individuals accessing this website will make their own determination of how suitable the information and data is for their usage and intent. In no event will PGI be responsible for damages resulting from the use or reliance upon this information and data. PGI does not warrant that the use of this information is free of any claims of copyright infringement.



2017 Harvest Reports

Day 5



■ Today's Reports

■ Previous Reports